

# **Demolition of 523 residences and structures since the beginning of 2016**



## **Unprecedented vicious attack on Palestinian construction in East Jerusalem and West Bank**

**By:**

**Department of Monitoring Israeli Violations**

**Land Research Center**

**Arab Studies Society**

April 2016

**Preamble:**

The Israeli occupation is still imposing restrictions on Palestinian construction to hinder demographic expansion. Complicated procedures and restrictions are especially imposed on construction in area classified "C" according to Oslo Accords; obtaining a building permit in such areas is almost impossible. Noteworthy, thousands of building permits/licenses are left unconsidered in the drawers of Israel Municipality of Jerusalem and Planning and Construction Committee- Israel Civil Administration. On the contrary, the Israeli government ratifies and approves the construction of thousands of units for colonists in the colonies of East Jerusalem and West Bank.

Such measures and reiterations aim at limiting Palestinian construction to create "reserve" of land for colonial expansionist plans.

**Demolition of Palestinian residences**

Team of field research at Land Research Center documented, in the past three months, the demolition of 523 residences and structures. Demolitions are detailed as follows:

188 residences that sheltered 856 people including 414 children. 18 residences of the aforementioned were still under construction.

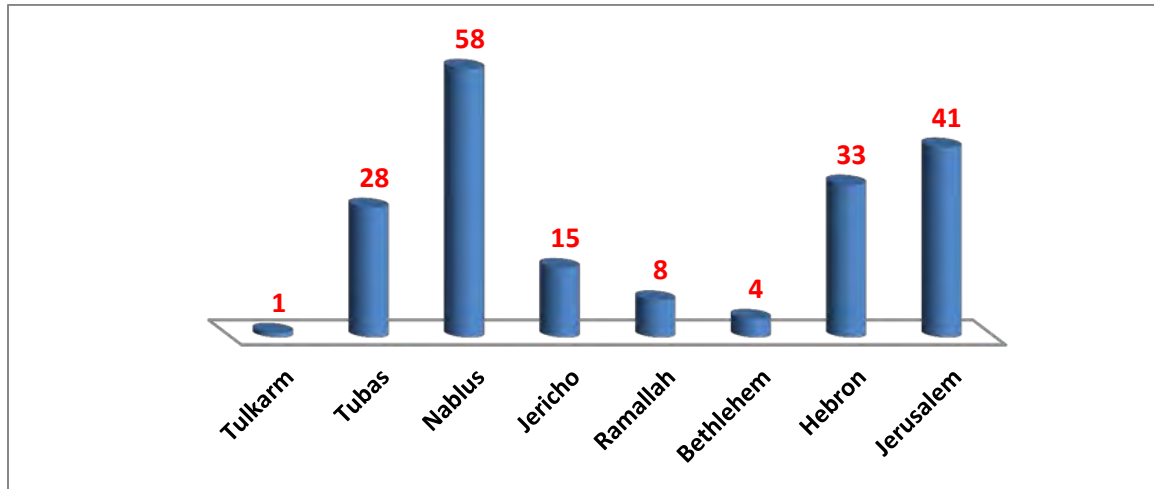
Nature of demolished structure:

- 97 residential tents
- 39 cement bricks houses with metal slaps roofs
- 36 cement and stone bricks houses
- 7 caves
- 6 cement bricks
- 2 caravans
- 1 construction foundation

*The following table shows the number of demolished residences during the first three months of 2016 by governorates:*

Governorate	No. of demolished residences	Area\m <sup>2</sup>	Family	Minors
Jerusalem	41	4372	148	80
Hebron	33	1973	211	105
Bethlehem	4	370	26	16
Ramallah	8	615	40	19
Jericho	15	639	96	53
Nablus	58	2552	253	102
Tubas	28	1623	77	36
Tulkarm	1	120	5	3
<b>Total</b>	<b>188</b>	<b>12264</b>	<b>856</b>	<b>414</b>

Source : Field observation- Department of Monitoring Israeli Violations- Land Research Center-2016



The graph illustrates the number of demolished residences during the first three months of 2016 by governorates

Nablus governorate recorded the highest rate of demolitions. Israeli Occupation Forces targeted the hamlets of Ein Al-Rshash and Tana with wide-scale demolition operations. Khirbet Tana was entirely demolished for three times in row during February and March.

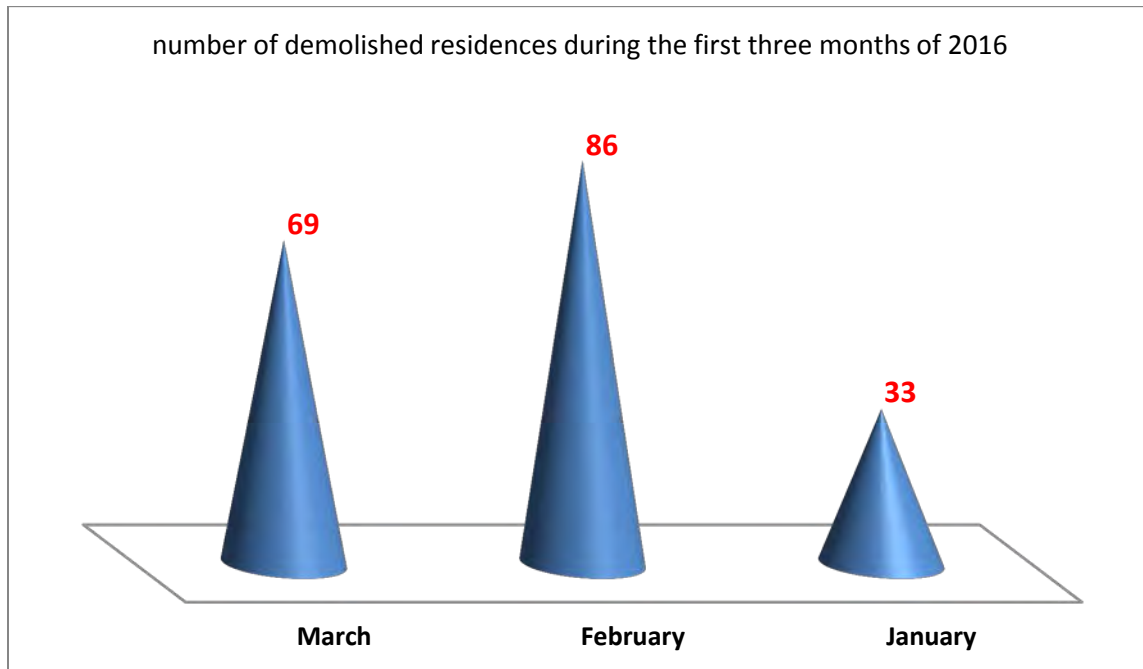
Jerusalem came next in demolition rates. Israeli Occupation Forces targeted the Bedouin communities of Abu Nowar and Jabal AL-Baba in addition to residences in the Jerusalem neighborhoods of Silwan, Beit Hanina, At-Tur, Sur Baher and Jabal Al-Mukabir.

As for Hebron governorate, the Bedouin communities of east Yatta (Jinba, Halawah, Susiya and Laseifer) were targeted in addition to other locations in the towns of Dura and Ad-Dhahiriya

*The following table shows information on the number of demolished residences during the first three months of 2016 :*

Month	No. of demolished structures	Area\m <sup>2</sup>	Family	Minors
January	33	2762	187	95
February	86	5018	416	210
March	69	4424	255	111
<b>Total</b>	<b>188</b>	<b>12204</b>	<b>858</b>	<b>416</b>

Source : Field observation- Department of Monitoring Israeli Violations- Land Research Center-2016



## Demolition of Palestinian structures

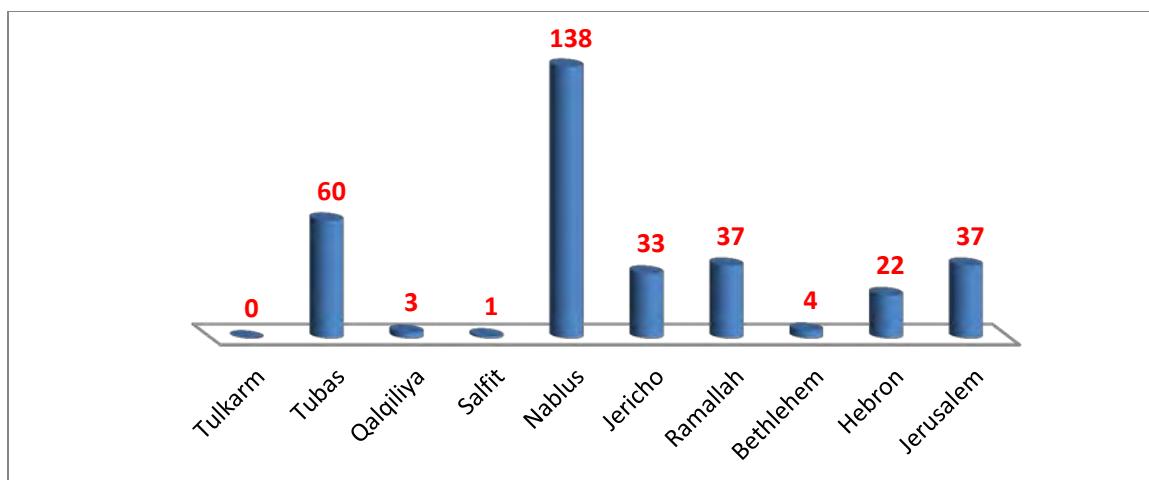
The occupation also targeted 335 Palestinian structures, 1527 people including 700 children used to live off of them. The structures are:

- 166 agricultural barracks sheltering 3230 sheep and 14 cows
- 44 commercial buildings
- 44 portable toilets
- 34 kitchen unit
- 19 agricultural rooms
- 15 water wells, tanks and cisterns
- 4 retaining walls
- 3 greenhouses
- 2 power grids
- 2 schools
- 2 playgrounds and parks

The following table shows information on the demolished structures during the first three months of 2016 by governorates:

Governorate	No. of demolished structures	Family	Minors
Jerusalem	37	139	57
Hebron	22	116	59
Bethlehem	4	15	7
Ramallah	37	133	56
Jericho	33	470	261
Nablus	138	317	135
Salfit	1	7	5
Qalqiliya	3	35	26
Tubas	60	295	94
Tulkarm	0	0	0
<b>Total</b>	<b>335</b>	<b>1527</b>	<b>700</b>

Source : Field observation- Department of Monitoring Israeli Violations- Land Research Center-2016

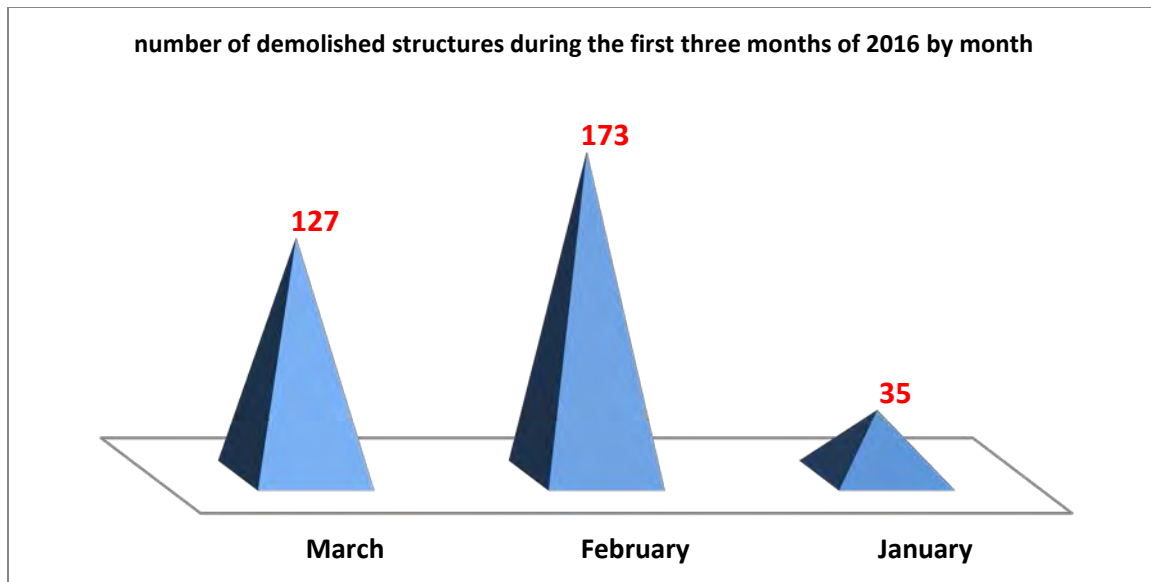


The graph illustrates the number of demolished structures during the first three months of 2016 by governorates

The following table shows the number of demolished structures during the first three months of 2016 :

Governorate	No. of demolished structures	Family	Minors
January	35	354	127
February	173	807	418
March	127	366	155
<b>Total</b>	<b>335</b>	<b>1527</b>	<b>700</b>

Source : Field observation- Department of Monitoring Israeli Violations- Land Research Center-2016

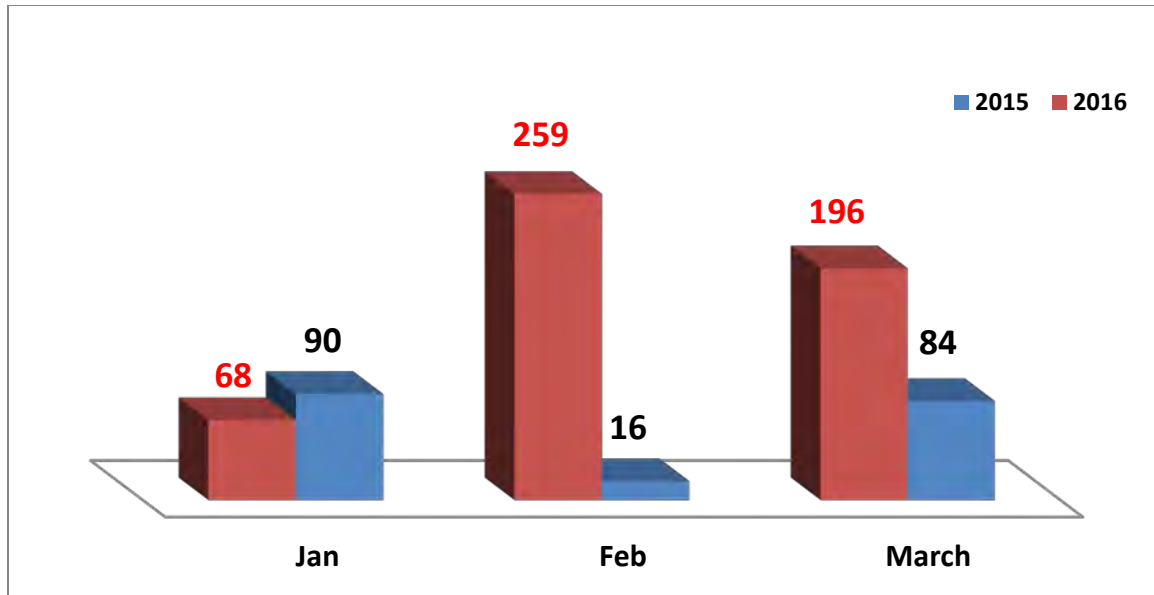


**Demolition of structures and homes: tripled compared to last year**

The vicious attack on Palestinian structures increased with a rate of 275% compared to the first three months of 2015. A total of 190 residences and structures were demolished. In other words, demolition tripled in number compared to 2015. The following table rates of demolition during the first three months of 2015 and 2016;

Year\ month	Jan	Feb	March	total
2015	90	16	84	190
2016	68	259	196	523

Number of demolished structures and residences in the first three months of 2015 and 2016



The graph illustrates the number of demolished structures and residences in the first three months of 2015 and 2016

**Home and structure demolition is a blatant to international laws and conventions including but not limited to :**

**The Universal Declaration of Human Rights:**

- Article 1 states: " All human beings are born free and equal in dignity and rights. They are endowed with reason and conscience and should act towards one another in a spirit of brotherhood."
- Article 17: " (1) Everyone has the right to own property alone as well as in association with others.

(2) No one shall be arbitrarily deprived of his property."

**The 1907 the Hague Convention**

- Article 23: " In addition to the prohibitions provided by special Conventions, it is especially forbidden



g. To destroy or seize the enemy's property, unless such destruction or seizure be imperatively demanded by the necessities of war;"

#### **The Geneva Fourth convention**

- article 53: " Any destruction by the Occupying Power of real or personal property belonging individually or collectively to private persons, or to the State, or to other public authorities, or to social or cooperative organizations, is prohibited, except where such destruction is rendered absolutely necessary by military operations."

#### **The International Covenant on Economic, Social and Cultural Rights:**

- Article 11.1 states: "The States Parties to the present Covenant recognize the right of everyone to an adequate standard of living for himself and his family, including adequate food, clothing and housing, and to the continuous improvement of living conditions. The States Parties will take appropriate steps to ensure the realization of this right, recognizing to this effect the essential importance of international co-operation based on free consent".

#### **Photos documenting demolitions:**



Jerusalem town of Eizariya: rubbles of agricultural structures in the Bedouin community of Abo Nowar.  
January 2016



Demolition of martyr Baha Ilyyan's residence on the claim of security purposes. Jerusalem, January 2016



Hebron village of Beit Al-Rush: Israel Army and Civil Administration while demolishing structures on January 2016



Kids of Tana hamlet play on the rubbles of their demolished houses. Third time demolition by the Israeli occupation in 2016



Tana hamlet- Nablus: even residential caves were not safe from occupational measures. March 2016



Masafer Yatta-Hebron: a demolition of 20 residence renders 100 people homeless on February 02, 2016



Beita-Nablus: Vegetables central market before demolition. February 2016



Beita-Nablus: Vegetables central market after demolition. March 2016

### **Demolition threats on Palestinian structures:**

There are 324 structures and residence in the West Bank including East Jerusalem that are threatened of demolition. The structures are detailed as follows:

- 209 residences, of which 121 houses were notified of stop-work, 44 others notified of administrative demolition orders, 24 others notified of stop-work and demolition orders, 2 others notified of eviction of closed military area, 2 others notified of additional opportunity to object a demolition and 4 other notified by a military orders on security claims
- 115 structures, of which 73 were notified of stop-work, 22 others notified of stop-work and demolition, 19 others notified of additional opportunity to object a demolition and 1 other notified of administrative demolition

**It is reported that the threatened structures vary in nature; details are below:**

- 41 agricultural barrack (shelter for 1300 sheep)
- 44 commercial structures
- 5 agricultural rooms (fodder and agricultural tools storage units)
- 9 water wells
- 2 roads
- 14 other structures (5 traditional ovens, 2 portable toilets, 1 kitchen unit, 1 cars parking area, 1 cemetery, 1 retaining wall, 1 mosque, 1 power grid and 1 playing ground)

The following table shows the number of threatened residences during the first three months of 2016 by governorate:

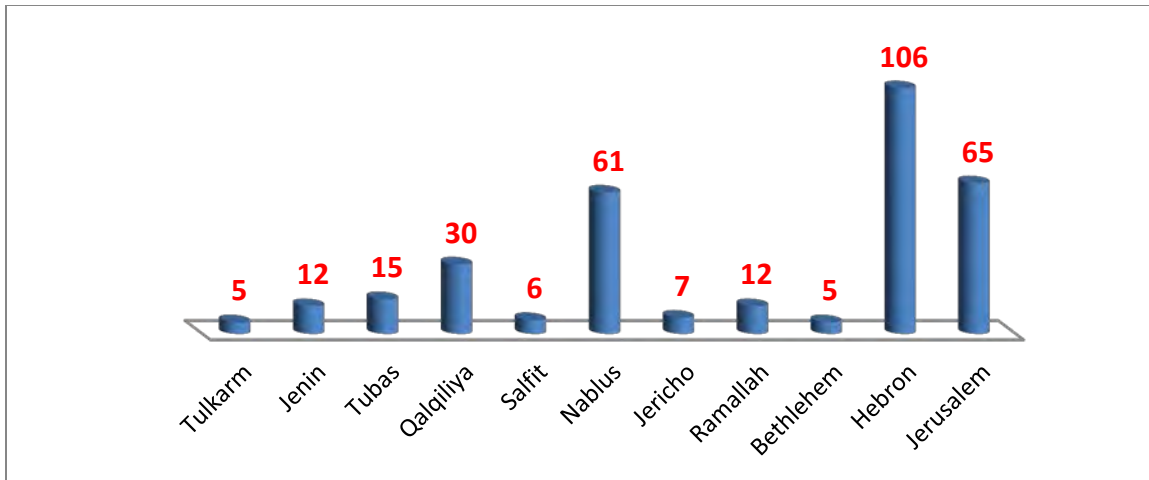
Governorate	No. of threatened structures	Area\m <sup>2</sup>	Family members	Minors
Jerusalem	63	4335	285	129
Hebron	63	5321	206	115
Bethlehem	5	800	40	17
Ramallah	8	1025	47	31
Jericho	5	425	33	16
Nablus	21	1330	111	53
Salfit	6	840	41	15
Qalqiliya	22	2039	77	35
Tubas	14	700	87	46
Jenin	1	40	6	2
Tulkarm	1	120	7	5
<b>Total</b>	<b>209</b>	<b>16975</b>	<b>940</b>	<b>464</b>

Source : Field observation- Department of Monitoring Israeli Violations- Land Research Center-2016

The following table shows the number of threatened structures during the first three months of 2016 by governorate:

Governorate	No. of threatened structures	Family	Minors
Jerusalem	2	308	155
Hebron	43	4101	2356
Ramallah	4	20	11
Jericho	2	11	6
Nablus	40	288	144
Qalqiliya	8	27	12
Tubas	1	6	2
Jenin	11	66	35
Tulkarm	4	21	9
<b>Total</b>	<b>115</b>	<b>4848</b>	<b>2730</b>

Source : Field observation- Department of Monitoring Israeli Violations- Land Research Center-2016



The graph illustrates the number of threatened structures and residences during the first three months of 2016 by governorate

Badras- Ramallah: an aerial photo illustrating the location of targeted structures of demolition. January 2016







A threatened house in Badras village

Stop-work orders on 16 residences in the Hebron town of Bani Na'im. March 2016



A threatened residence belonging to Al-Tarayra family in Bani Na'im village



Um Al-Kheir- Masafer Yatta: stop-work orders on a Al-Hadhaleen family residence on March 2016



An aerial photo illustrating the locations of threatened houses of demolition nearby Karmeil colony

Bedouin community of Jabal Al-Baba: a community targeted by an Israeli plan of displacement called E1

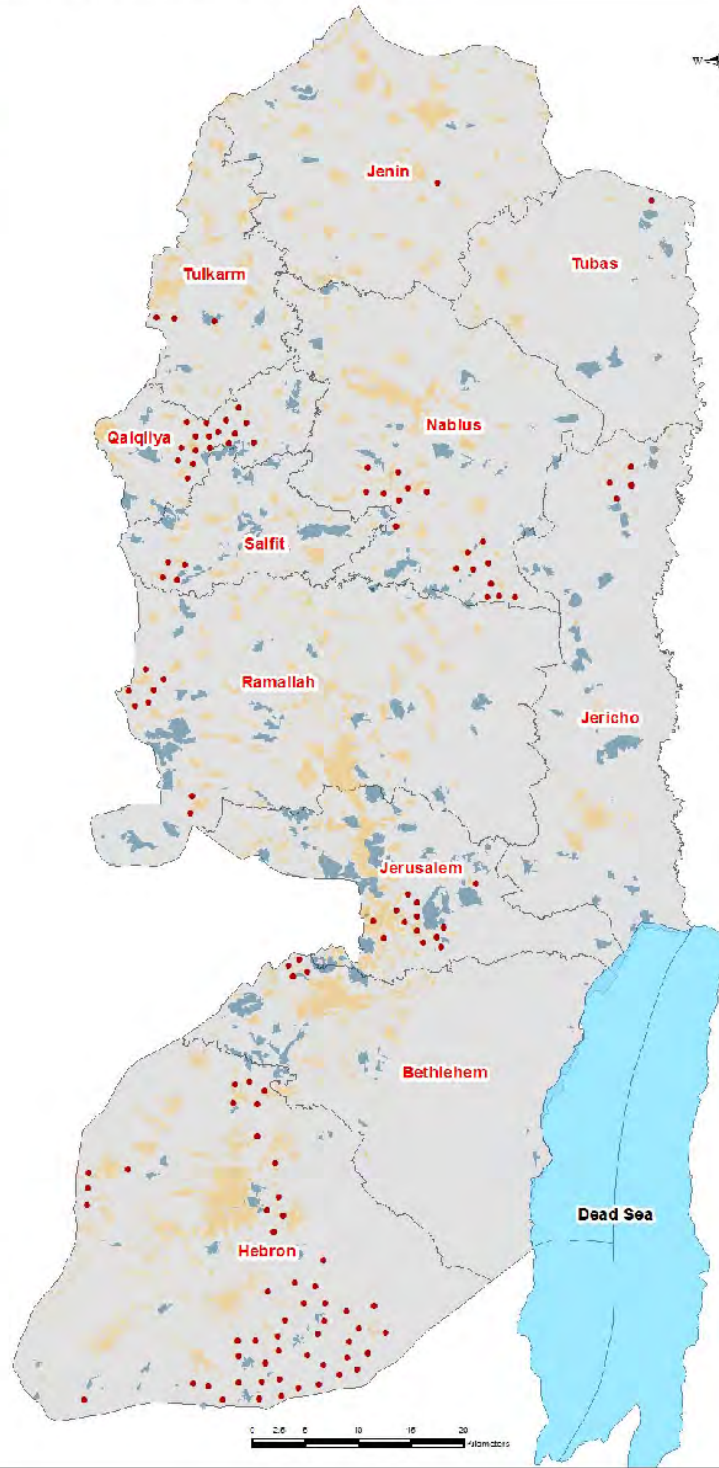


The community only mosque was also threatened



All that for the favor of colonial expansion

A map of Israeli Orders in West Bank 2016



- Legend**
- Orders 2016
  - Water Bodies
  - Palestinian Built-up Areas
  - Israel Colonies
  - Governorate Boundaries