

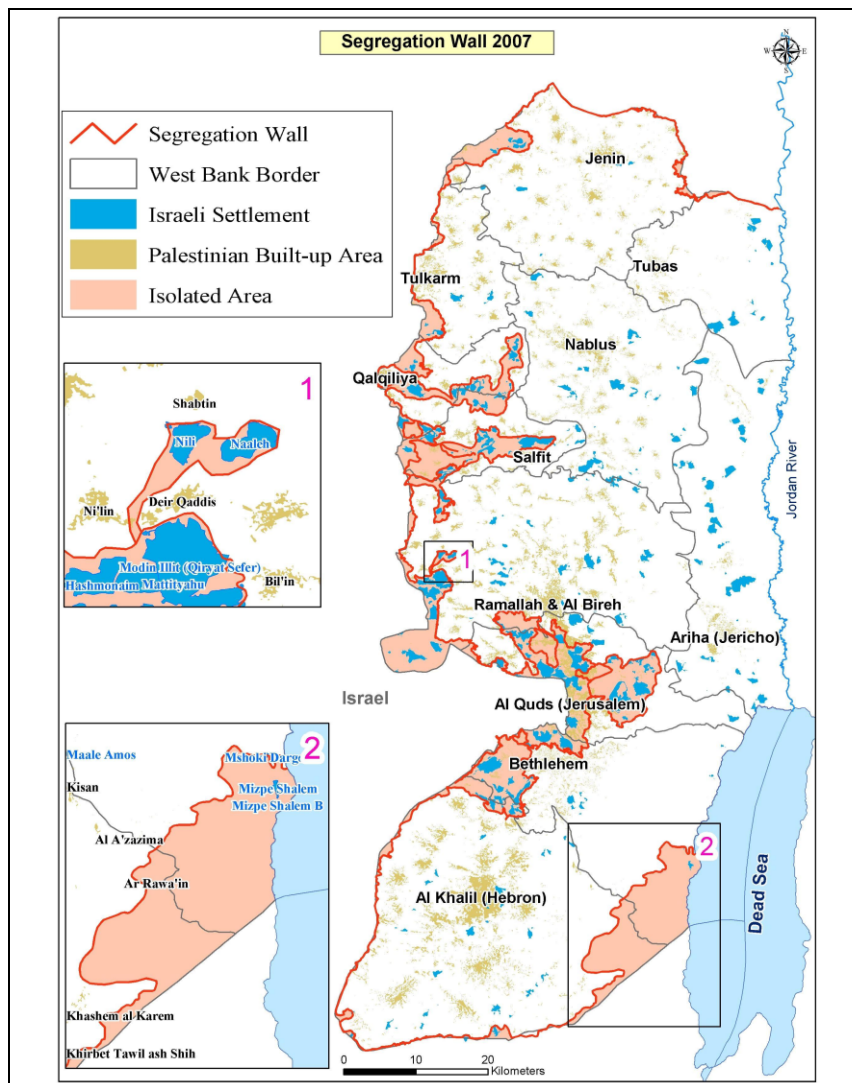
# Israel's Segregation Wall

ARIJ Quick Facts

## Isolation and Ghettoization in the

On September 12, 2007 the Israeli government published another revised route of the Segregation Wall in the West Bank. The new revised plan makes some significant changes in areas northwest of Ramallah city and in the southern part of Hebron Governorate. The updated map that was published in September 2007 was actually endorsed back to April 2007, but was only published on the website until that date.

According to the revised plan, the Segregation Wall will run along 770 km in the West Bank and only 80 km of it will run on the 1949 Armistice Line (Green Line). When complete, the wall will isolate 713 km<sup>2</sup> of Palestinian land in the West Bank (12.6 % of the total area 5661 km<sup>2</sup>) in what became to known as the Western Segregation Zone; the area which falls between the wall and the 1949 Armistice Line (Green Line). It will enclose 107 Israeli settlements (including those in East Jerusalem) accommodating 425,000 (80.2%) of the Israeli settlers' total population in the West Bank (530,000)



Moreover, the Israeli Army consolidated its control over the eastern terrains (including the Jordan Valley area) of the West Bank territory with 28 military controlled checkpoints. The targeted area as area that came to known as the Eastern Segregation Zone is 1555 km<sup>2</sup> (27.5% of the West Bank area) stretches along 200 Km from north to south. After the 1967 war, Israel classified some 925 Km<sup>2</sup> of what the Eastern Segregation Zone as 'closed military area'. Furthermore, Israel has illegally classified an additional 630 Km<sup>2</sup> of the Eastern Segregation Zone as 'State Land' which include the area of the settlements, the military bases, and some parts of the closed military areas.

In total, the Israeli Segregation Plan expropriates at least 40.1% of the total West Bank area, which according to Israel will be excluded from any future negotiations with the Palestinians, and consequently out of any peace settlement agreement.

### **The Status of the Israeli Western Segregation Wall in the West Bank:**

- 397 km (51.6% of the total length) is completed in the West Bank.
- 303 km (39.3% of the total length) is planned to be constructed in the West Bank.
- 70 km (9.1% of the total length) is under construction in the West Bank.
- 80 km (10.4 % of the total length) runs on the 1949 Armistice Line (Green Line).

### **Palestinian Communities Affected by the Segregation Wall:**

- 29 Palestinian villages' boundaries with a total area of 216.7 Km<sup>2</sup> will become trapped in enclaves; in addition to that, 138 Palestinian villages' boundaries are largely affected, some 554.4 Km<sup>2</sup> will be lost behind the Segregation Wall.
- 40 Palestinian communities, including more than 37,000 people, will be isolated in the Eastern Segregation Zone.

### **Environmental Resources Appropriated by the Segregation Wall:**

- 29 wells and 29 springs will be isolated in the Western Segregation Zone.
- 204 wells and 43 springs will be isolated in the Eastern Segregation Zone
- Up to **192 Km<sup>2</sup> of agricultural land area** isolated within the Western Segregation Zone (6.8% of the total Agricultural lands in the West Bank) in addition to **844 Km<sup>2</sup> within the Eastern Segregation Zone** (29.9% of the total agricultural lands in the West Bank), both of which constitute **18.3 %** of the total West Bank Area.
- Up to **246.8 Km<sup>2</sup> of forest land and areas with shrubs** are included in the Western Segregation Zone (10.8% of the total forests and open spaces area in the West Bank) and **707.8 Km<sup>2</sup> in the Eastern Segregation Zone** (31.1% of the total Forests and open spaces area in the West Bank), both of which constitute 16.9 % of the total area of the West Bank.

## The Segregation Wall and Illegal Israeli Settlements

- 107 Israeli settlements (out of 199 settlements in the West Bank), with a combined population exceeding 425000 (80.2 % of the total Israeli settlers' population are in the West Bank, 530,000) are in the Western Segregation Zone.
- Settlements in the Western Segregation Zone cover an area of 106.7 km<sup>2</sup> (15% of the total western segregation Zone Area).
- 38 Israeli settlements, with a combined population of 12530 settlers, (.24% of the settlers' population), are in the Eastern Segregation Zone.
- Settlements in the Eastern Segregation Zone cover an area of 37.8 km<sup>2</sup> (.24% of the area of the Zone).

### Changes made on the Israeli Segregation Wall Route during the period between 2002 & 2007

This is not the first time that the Israeli ministry of defense makes changes with regard to the Segregation Wall's route in the West Bank; in fact, this is the fourth alteration to the Segregation Wall route since the Israeli Government sanctioned its construction in the West Bank back in June 2002. Each change in Wall route showed an increase in wall's length and the segregated area.

Date of Change	Wall Length	Area Isolated	% of the West Bank Area
June 2004	645 km	633 km <sup>2</sup>	11.2
February 2005	683 km	565 km <sup>2</sup>	10
April 2006	703 km	555 km <sup>2</sup>	9.8
April 2007	770 km	713 km <sup>2</sup>	12.6

Source: ARIJ GIS Database 2007